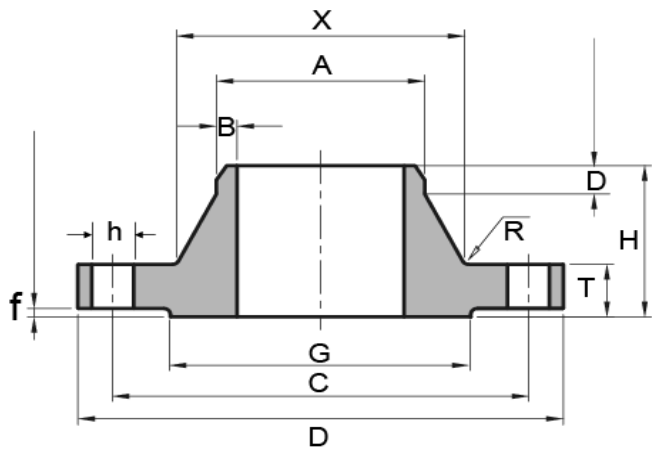


## EN1092-1 PN25 Welding Neck Flanges Type 11



Rated Diameter	Flange Dimension					Neck Size				Raised Face		Screws Parameter		Approx Weight per Piece	
	Hub Diam. Chamfer of W.N.	Dia of Bolt Circle	O.D.	Thk. of Flange	Length Hub	Diam. Of Hub	Wall Thick-ness	Fillet Radius Min	Length of Wall Thick-ness	Dia of R.F.	Thick-ness of R.F.	Dia of Bolt Holes	Thread		Number of Bolt Holes
DIN	A	C	D	T	H	X	B	R	D	G	f	h		n	KG
15	21,3	65	95	16	38	32	2,00	4	6	45	2	14	M12	4	0,768
20	26,9	75	105	18	40	40	2,30	4	6	58	2	14	M12	4	1,090
25	33,7	85	115	18	40	46	2,60	4	6	68	2	14	M12	4	1,300
32	42,4	100	140	18	42	56	2,60	6	6	78	2	18	M16	4	1,910
40	48,3	110	150	18	45	64	2,60	6	7	88	3	18	M16	4	2,150
50	60,3	125	165	20	48	75	2,90	6	8	102	3	18	M16	4	2,850
65	76,1	145	185	22	52	90	2,90	6	10	122	3	18	M16	8	3,680
80	88,9	160	200	24	58	105	3,20	8	12	138	3	18	M16	8	4,780
100	114,3	190	235	24	65	134	3,60	8	12	162	3	22	M20	8	6,460
125	139,7	220	270	26	68	162	4,00	8	12	188	3	26	M24	8	8,860
150	168,3	250	300	28	75	192	4,50	10	12	218	3	26	M24	8	11,700
200	219,1	310	360	30	80	244	6,3	10	16	278	3	26	M24	12	17,100
250	273	370	425	32	88	298	7,1	12	18	335	3	30	M27	12	24,300
300	323,9	430	485	34	92	352	8,0	12	18	395	4	30	M27	16	31,800
350	355,6	490	555	38	100	398	8,0	12	20	450	4	33	M30	16	48,800
400	406,4	550	620	40	110	452	8,8	12	20	505	4	36	M33	16	63,300
450	457	600	670	46	110	500	8,8	12	20	550	4	36	M33	20	76,000
500	508	660	730	48	125	558	10,0	12	20	615	4	36	M33	20	97,000
600	610	770	845	48	125	660	11,0	12	20	720	5	39	M36	20	121,000
700	711	875	960	50	129	760	14,2	12	20	820	5	42	M39	24	155,000
800	813	990	1085	53	138	864	16,0	12	22	930	5	48	M45	24	205,000
900	914	1090	1185	57	148	968	17,5	12	24	1030	5	48	M45	28	249,000
1000	1016	1210	1320	63	160	1070	20,0	16	24	1140	5	56	M52	28	338,000